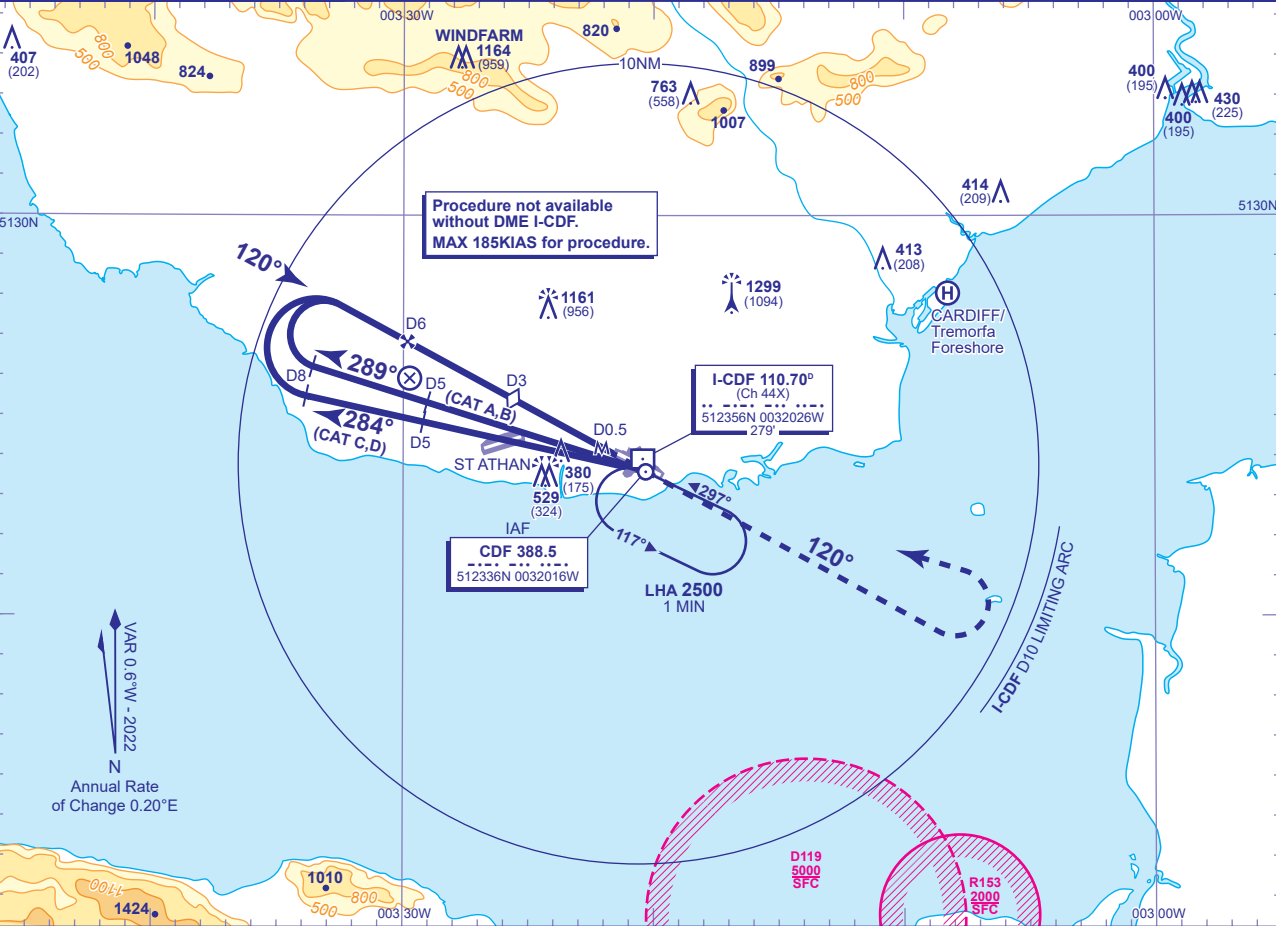


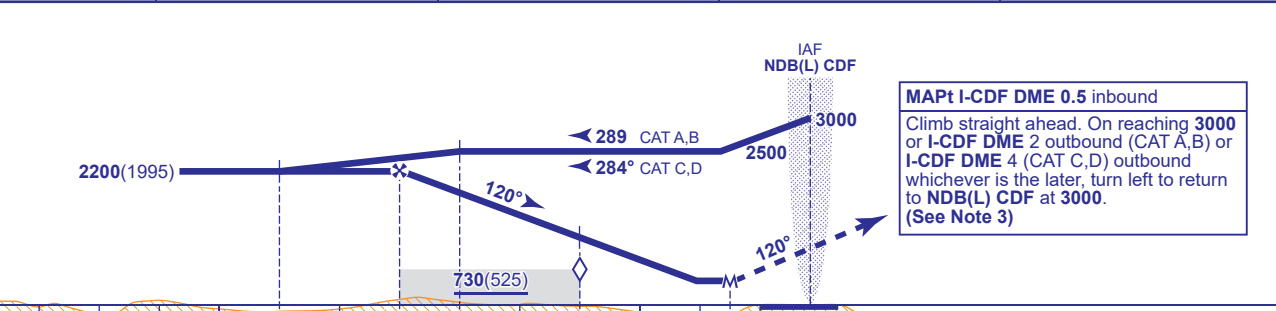
INSTRUMENT APPROACH - ICAO

CARDIFF
NDB(L)/DME
RWY 12
(ACFT CAT A,B,C,D)

	APP 119.155, 125.855	CARDIFF APPROACH	AD ELEVATION 220	TRANSITION ALTITUDE 6000
	TWR 133.105	CARDIFF TOWER	THR ELEVATION 205	
	RAD 125.855	CARDIFF RADAR	OBSTACLE ELEVATION 1299 AMSL (1094) (ABOVE THR)	
	119.155 (LARS)			
	ATIS 132.480	CARDIFF INFORMATION	BEARINGS ARE MAGNETIC	



RECOMMENDED PROFILE Gradient 5.3%, 320FT/NM			
DME I-CDF	5	4	3 (SDF)
ALT(HGT)	1880(1675)	1550(1345)	1230(1025)
			900(695)



Aircraft Category		A	B	C	D	Rate of descent	G/S KT	160	140	120	100	80
OCA (OCH)	Procedure	630(425)	630(425)	630(425)	630(425)		FT/MIN	860	760	650	540	430
VM(C)OCA (OCH AAL)	Total Area	680(460)	820(600)	1560(1340)	1690(1470)							
	SW of RWY 12/30	680(460)	820(600)	920(700)	920(700)							

NOTE 1 FAT offset 2° and nominally intercepts RWY C/L 1.2NM before THR.
2 Subject to ATC approval, aircraft inbound to NDB(L) CDF and receiving DME I-CDF may descend to 3000 after passing I-CDF DME 10.
3 Aircraft to remain within I-CDF DME 10 during the missed approach turn in order to be contained within Cardiff controlled airspace. If unable to comply, notify ATC.

CHANGE (8/23): I-CDF DME ELEVATION REVISED.